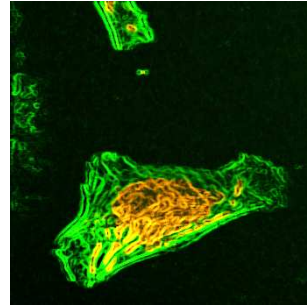
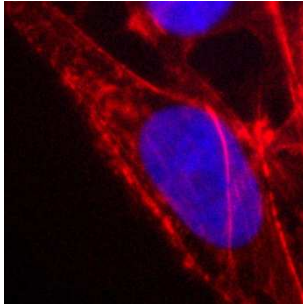


Fluorescence Nanoimaging (AFM)

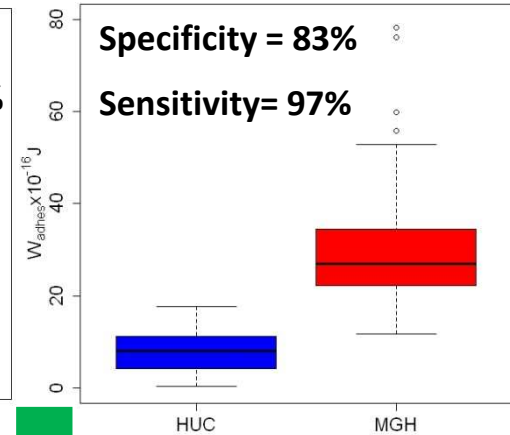
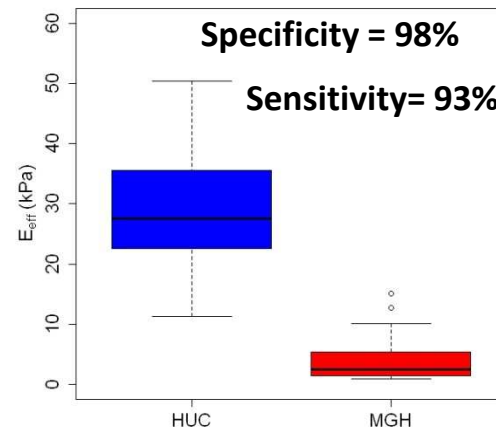
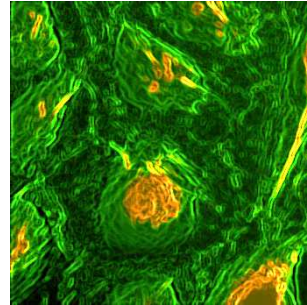
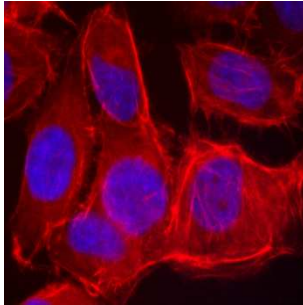
Nanocytomechanics (AFM)

Elasticity of cell wall and Adhesion energy

SV-HUC-1
Normal cells



MGH-U1
Cancer cells



Nanomechanics (AFM) + Spectroscopy (Raman) \Rightarrow discriminates cancer from normal cells with high specificity and sensitivity for early diagnosis of cancer

Modulated Raman Spectroscopy

